

THIS IS FRONT ROW & CO.

2021

CELEBRATING **30** YEARS OF
FRONT ROW & CO
EST. 1991



Every day brings a chance to make a change;
take an exciting new direction.

Clothes are made to be worn. Ours are made to last.

For teams, clubs and workplaces. For brands looking
to put their name to quality garments. For the carefree.
For those with a youthful spirit. For those who work
hard and play harder.

It's 2021.

THIS IS FRONT ROW & CO.

GREAT LOOKING LEISUREWEAR.
THOUGHTFULLY CREATED.

04
3 DECADES IN THE MAKING:
HERITAGE-LED FASHION

06
NEW: TAKE A FRESH LOOK

08
CASUAL TOPS

14
RUGBY SHIRTS

24
SWEATS

30
WOVENS

40
LAST, BUT NOT LEAST

CELEBRATING **30** YEARS OF
FRONT ROW & CO
 EST. 1991

Every decade brought a chance to make a change.



Here from the very beginning, the original FR001 is the product that launched Front Row in 1991, marking the brand as the pioneer of rugby styles in the world of the garment decoration and re-sale. Still in the range today (Pg 18), this classic later inspired the lighter-weight FR100 (Pg 16-17), securing the brand's legacy as the market-leader.



Unrivalled in its attention to detail, the brand is known for the premium finishing touches that elevate the products to a higher standard. The success of the super soft FR043 (Pg 23), from the former Front Row Collection capsule range, brought the development of the Tag Free Premium Superfit Rugby FR104 (Pg 22).

3 DECADES OF FRONT ROW & CO.

GREAT LOOKING LEISUREWEAR.
 THOUGHTFULLY CREATED THROUGH EXPERIENCE.



The now iconic FR008 (Pg 19) proved to be a hit within both heritage-based sectors and with independent fashion brands, leading to the introduction of the FR006 and FR007 (Pg 20-21). With the rising demand for tag free garments in the market, Front Row & Co. now proudly offers Tag Free products across almost 80% of the range; while the remaining long-standing favourites are in the process of making the change, for easier re-branding.



TAKE A FRESH LOOK

ALL NEW STYLES ARE TAG FREE
FOR EASY RE-BRANDING



FR006
Panelled
Quarter Zip
Pg 20

FR640
Joggers with
Striped Cuffs
Pg 25

FR841
Hoodie with
Striped Cuffs
Pg 26



FR840
Sweat with
Striped Cuffs
Pg 26-27

FR625
Stretch Cargo
Trousers
Pg 31



FR905
Pullover Half
Zip Jacket
Pg 39

CASUAL TOPS

8

FR135

Long & Short Sleeved BRETON STRIPED T-SHIRTS

FR134 & FR135

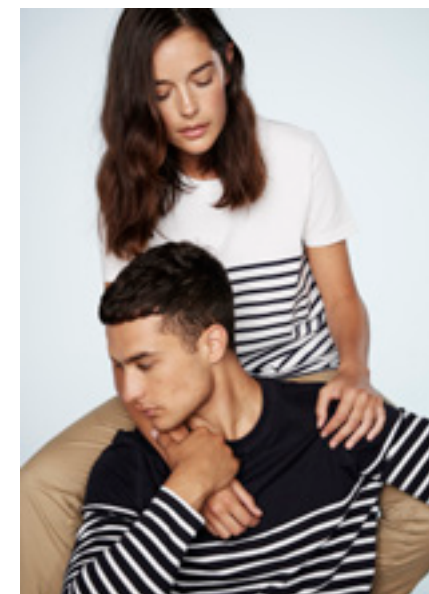
— TAG FREE —



Regular fit long and short sleeved unisex T-shirts. Crew neck with stretch ribbed neckline. 'V' detail at neck. Flatlock stitching. Contrast plain upper panel. Tag Free.

—
100% Cotton
180gsm Single Jersey

FR134/FR135 SIZES: XS — 2XL



PRINTED FOR ILLUSTRATION PURPOSES: ALL GARMENTS ARE FREE FROM DECORATION

9

Striped Jersey
POLO SHIRT

FR 230

— TAG FREE —

Unisex jersey polo shirt with flat knit collar & cuffs. 3-button placket with inner contrast. Herringbone taped side vents. Tag Free.

—
100% Cotton
180gsm Single Jersey

FR 230 SIZES: XS — 2XL



Navy/White White/Navy



Stand Collar Stretch
POLO SHIRT

FR 244

— TAG FREE —



Unisex stretch micro pique polo shirt. Flat knit collar & cuffs. Stand collar with tipped edge. 3-button placket. Tag Free.

—
96% Cotton/4% Elastane
200gsm Micro Pique
(Heather Grey: 81% Cotton/
15% Viscose/4% Elastane)

FR 244 SIZES: XS — 2XL

< STRETCH >



Heather Grey/Bright Navy Navy/White White/Bright Navy



Men's & Ladies' Contrast Pique
POLO SHIRTS

FR200 & FR201

— TAG FREE* —



Pique polo shirts with contrast woven inner collar band and placket. Contrast herringbone tape in side vents. Contrast tipping on cuffs. Self-fabric collar. Side panels with flatlock stitching. Ladies' style has longline placket and is shaped at waist. Tag Free.

100% Cotton
200gsm Pique

MEN'S FR200 SIZES: S — 2XL
LADIES' FR201 SIZES: S — 2XL



*PLEASE NOTE: SOME STOCK OF FR200/FR201 MAY HAVE SEWN BACK-NECK LABELS. ALL RECENT AND NEW PRODUCTION IS TAG FREE.

Men's & Ladies' Diagonal Striped Pique
POLO SHIRTS

FR212 & FR213

— TAG FREE —

Pique polo shirts with diagonal stripe at front and plain back. Flat knit collar. Ribbed cuffs with contrast tipping. Pearlised buttons with cross-stitch detail. Contrast herringbone tape in back neck and side vents. Ladies' is shaped at waist. Tag Free.

100% Cotton
200gsm Pique

MEN'S FR212 SIZES: XS — 2XL
LADIES' FR213 SIZES: S — 2XL



FR007

RUGBY SHIRTS

Men’s, Ladies’ & Kids’ Long Sleeved Plain
RUGBY SHIRTS

FR100, FR101 & FR109

Rugby shirts with classic woven collar. Ribbed cuffs. Side vents. Men’s has taped shoulders. Ladies’ is shaped at waist.

100% Cotton
270gsm Single Jersey



MEN'S FR100 SIZES: XS – 5XL

XS, 4XL & 5XL available in Black/Black, Black/White, Navy/White and Red/White.



LADIES' FR101 SIZES: XS – 4XL

KIDS' FR109 SIZES:

S(5-6), M(7-8), L(9-10), XL(11-13)



FR100



Long & Short Sleeved Original
RUGBY SHIRTS

FR001 & FR003



LONG SLEEVED FR001
SIZES: S – 3XL

3XL available in Black/White, Navy/White
and White/White



SHORT SLEEVED FR003
SIZES: S – 2XL



Heavyweight unisex rugby shirts with classic woven collar. Ribbed cuffs. Taped shoulders and side vents. Rubber buttons. Locker patch.

100% Ring Spun Cotton
300gsm Heavyweight Single Jersey

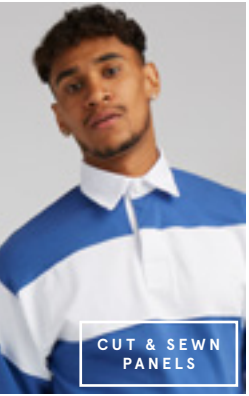


Quartered & Striped
RUGBY SHIRTS

FR002 & FR008

Heavyweight unisex rugby shirts with classic woven collar. Ribbed cuffs. Taped shoulders and side vents. Rubber buttons.

100% Ring Spun Cotton
300gsm Heavyweight Single Jersey



QUARTERED FR002
SIZES: S – 2XL



STRIPED FR008
SIZES: S – 2XL

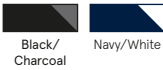


Panelled
QUARTER ZIP
FR006

— TAG FREE —

Heavyweight unisex ¼ zip top.
Self-fabric funnel neck. Silver YKK
metal zipper and zip pull. Ribbed cuffs.
Taped shoulders, neck and side vents.
Stepped hem. Tag Free.
—
100% Ring Spun Cotton
300gsm Heavyweight Single Jersey

FR006 SIZES: XS — 2XL



Panelled
RUGBY SHIRT
FR007

— TAG FREE —

Heavyweight unisex rugby shirt with
classic woven collar. Ribbed cuffs.
Taped shoulders and side vents. Rubber
buttons. Tag Free.
—
100% Ring Spun Cotton
300gsm Heavyweight Single Jersey



FR007 SIZES: S — 2XL



Premium Superfit
RUGBY SHIRT
FR104

— TAG FREE —

Unisex rugby shirt with classic woven collar. Peached fabric for a super-soft finish. Slim fit. Contrast striped tape at back neck and side vents. Zig-zag stitching detail under collar. Tag Free.

—
100% Cotton
300gsm Peach Finish
Heavyweight Single Jersey



FR104 SIZES: XS — 3XL

- Black
- Bottle
- Deep Burgundy
- Navy
- Red
- Royal



Front Row Collection Supersoft Long Sleeved
RUGBY SHIRT
FR043

— TAG FREE* —

Unisex rugby shirt with classic woven collar. Heavily brushed; supersoft hand feel. Ribbed cuffs. Self-fabric collar with contrast woven undercollar and placket. Stepped hem with contrast woven facing. Contrast tape at back neck, side vents and left side seam (as worn). Locker patch.

—
100% Combed Cotton
260gsm Heavily Brushed
Single Jersey

FR043 SIZES: S — 2XL

- Black
- Navy



*PLEASE NOTE: SOME STOCK OF FR043 MAY HAVE PRINTED BACK NECK LABEL. ALL RECENT AND NEW PRODUCTION IS TAG FREE.

SWEATS



24

FR841/FR640

Striped Cuffed JOGGERS

FR 640

— TAG FREE —

Slim fit unisex joggers. Quality cotton based brushed back fleece. Elasticated self-fabric waistband. Self-coloured herringbone drawcord. Elasticated striped rib cuffs. Side Pockets. Back Pocket. Tag Free.

—
70% Cotton/30% Polyester
280gsm Brushed Back Fleece

FR 640 SIZES: XS — 2XL



25



Striped Cuffed
SWEAT & HOODIE

FR840 & FR841

— TAG FREE —



Unisex sweat and hoodie with elasticated striped rib cuffs and hem. Quality cotton based brushed back fleece. Set-in sleeves. Herringbone back-neck tape. Tag Free.

FR840 Sweat
Plain ribbed crew neck.

FR841 Hoodie
Self-coloured herringbone drawcord.
Kangaroo pocket.



70% Cotton/30% Polyester
280gsm Brushed Back Fleece

FR840/FR841 SIZES: XS — 2XL



— NEW —

FR840

EMBROIDERED FOR ILLUSTRATION PURPOSES: ALL GARMENTS ARE FREE FROM DECORATION

French Terry
JOGGERS

FR 630

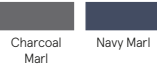
— TAG FREE —



Slim fit French Terry unisex joggers. Elasticated ribbed waistband and ribbed cuffs at hem. Contrast drawcord. Coverstitch detail on seams. Side pockets. Back pocket. Tag Free.

—
Navy Marl: 60% Cotton/40% Polyester
Charcoal Marl: 65% Polyester/35% Cotton
280gsm French Terry

FR 630 SIZES: XS — 2XL



Charcoal Marl Navy Marl

French Terry
HOODIE

FR 832

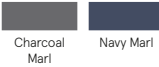
— TAG FREE —



Slim fit French Terry unisex hoodie with raglan sleeves and 'V' insert at neck. Ribbed waist and cuffs. Coverstitch detail on seams. Herringbone back neck tape. Contrast drawcord. Kangaroo patch pocket. Tag Free.

—
Navy Marl: 60% Cotton/40% Polyester
Charcoal Marl: 65% Polyester/35% Cotton
280gsm French Terry

FR 832 SIZES: XS — 2XL



Charcoal Marl Navy Marl

Front Row Collection Supersoft Quarter Zip
SWEATSHIRT

FR 040

— TAG FREE* —

Unisex ¼ zip sweatshirt. Heavily brushed for a supersoft hand feel. Jersey tipped cuffs. Self-fabric collar with contrast woven facing. Stepped hem with contrast woven facing. Contrast tape at side vents and left side seam (as worn). Locker patch. Metal zip and puller.

—
80% Cotton/20% Polyester
280gsm Brushed Back Fleece

FR 040 SIZES: S — 2XL



Black Navy

*PLEASE NOTE: SOME STOCK OF FR040 MAY HAVE PRINTED BACK NECK LABEL. ALL RECENT AND NEW PRODUCTION IS TAG FREE.



STEPPED
HEM



NEW FR905 / FR502 / FR621



WOVENS

Stretch Cargo
TROUSERS

FR 625

— TAG FREE —

Slim leg cargo trousers. Stretch fabric. YKK zip fly with buttoned waistband. Slanted front pockets. Back welt pockets with flaps and hook and loop fastening. Patch pockets on outer leg. Front knee darts. Functioning herringbone drawcord at hem. Garment washed. Tag Free.

—
97% Cotton/3% Elastane
220gsm Stretch Twill

< STRETCH >



ADJUSTABLE
HEM



— NEW —

FR 625 SIZES: XS — 2XL

Black Navy

Men's & Ladies'

STRETCH CHINOS

FR621 & FR622

— TAG FREE —

Flat front chino trousers. Stretch fabric. YKK zip fly with buttoned waistband. Slanted front pockets. Back welt pockets. Garment washed. Tag Free.

—

97% Cotton/3% Elastane
220gsm Stretch Twill

< STRETCH >



MEN'S FR621 SIZES: 28" — 40"
REG 32"/LONG 34"
LADIES' FR622 SIZES: XS/8 — 2XL/18
REG 32"



Men's & Ladies'
STRETCH CHINO SHORTS

FR605 & FR606

— TAG FREE —



Flat front chino shorts. Stretch fabric. YKK zip fly with buttoned waistband. Slanted front pockets. Back welt pockets. Garment washed. Tag Free.

—
97% Cotton/3% Elastane
220gsm Stretch Twill

< **STRETCH** >

MEN'S FR605 SIZES: 28" — 40"
LADIES' FR606 SIZES: XS/8 — 2XL/18



Men's
BOARD SHORTS

FR602

— TAG FREE —

Panelled board shorts. Elasticated waistband. Inner mesh brief. Inner key pocket. Side pockets. Back patch pocket with metal eyelet. Tag Free.

—
100% Polyester
120gsm Microfibre

FR602 SIZES: XS — 2XL



Checked Cotton
SHIRT

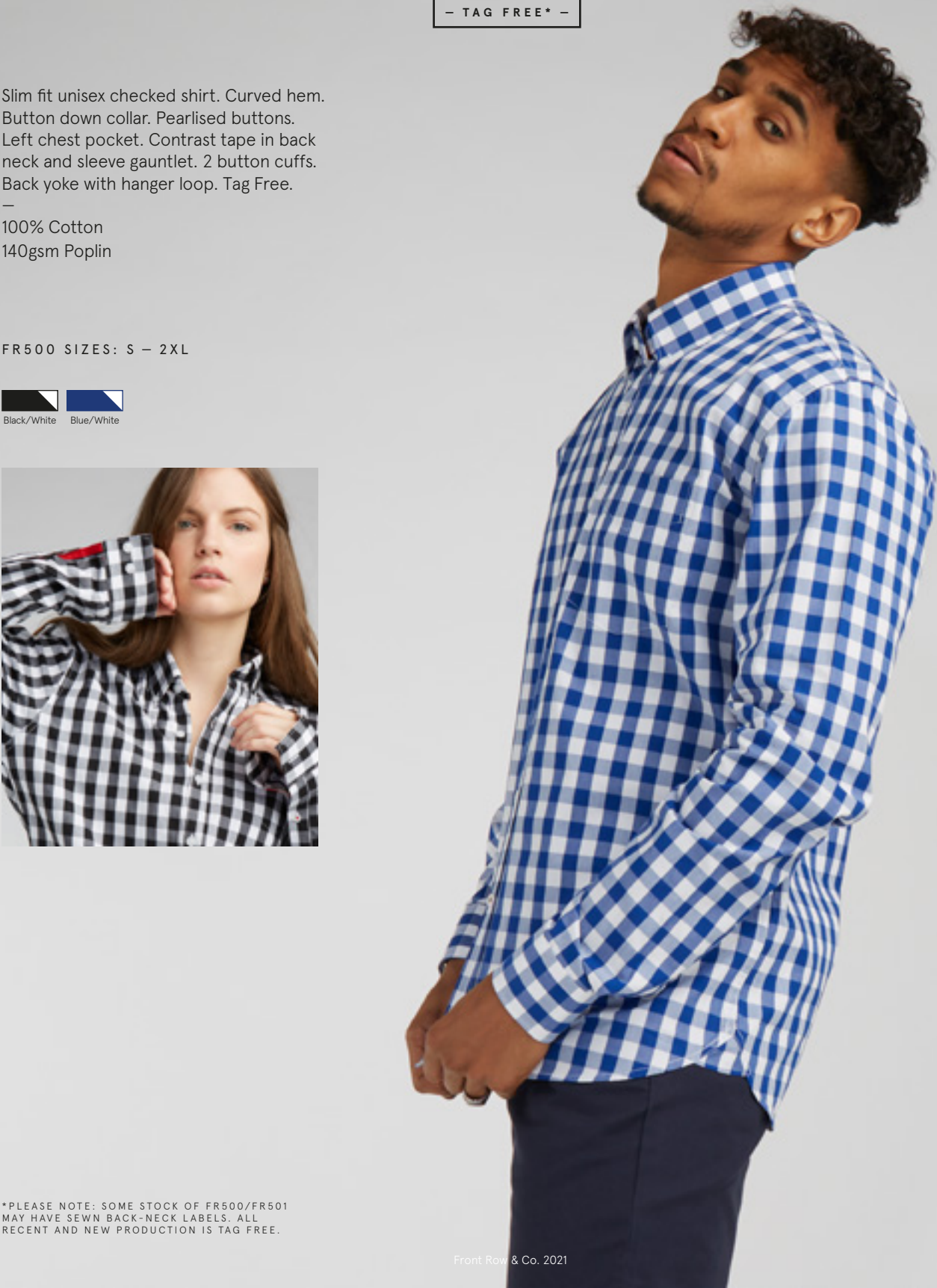
FR500

— TAG FREE* —

Slim fit unisex checked shirt. Curved hem. Button down collar. Pearlised buttons. Left chest pocket. Contrast tape in back neck and sleeve gauntlet. 2 button cuffs. Back yoke with hanger loop. Tag Free.

100% Cotton
140gsm Poplin

FR500 SIZES: S — 2XL



*PLEASE NOTE: SOME STOCK OF FR500/FR501 MAY HAVE SEWN BACK-NECK LABELS. ALL RECENT AND NEW PRODUCTION IS TAG FREE.

Classic Chambray
SHIRT

FR501

— TAG FREE* —



Slim fit unisex chambray shirt. Curved hem. Button down collar. Pearlised buttons. Left chest pocket. Contrast tape detail in back neck and sleeve gauntlet. 2 button cuff. Back yoke with hanging loop. Tag Free.

100% Cotton
200gsm Chambray

FR501 SIZES: S — 2XL



PRINTED AND EMBROIDERED FOR ILLUSTRATION PURPOSES; ALL GARMENTS ARE FREE FROM DECORATION



Supersoft Casual
SHIRT

FR502

— TAG FREE —



Slim fit unisex brushed oxford shirt. Narrow button-down collar. Supersoft fabric. Back yoke. 1 button cuff. Pearlised buttons. Tag Free.

80% Cotton/20% Polyester
170gsm Brushed Oxford

FR502 SIZES: XS — 2XL

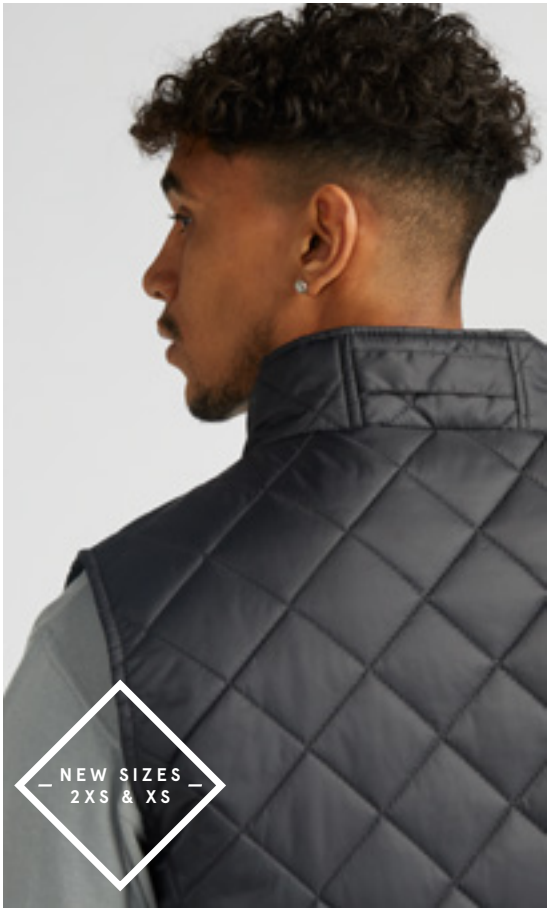


Diamond Quilt
GILET
FR903

Unisex quilted gilet with envelope pockets. Shower resistant outer fabric. Front zip and storm flap with press stud fastening. Hanger loop on back of collar suitable for decoration. Curved hem at back.

Outer: 100% Polyester
210T Taffeta with Shower
Resistant PU Coating
Lining & Wadding: 100% Polyester

FR903 SIZES: 2XS – 2XL



— NEW SIZES —
2XS & XS



Pullover Half Zip
JACKET
FR905

— TAG FREE —



— NEW —



Showerproof hooded unisex pullover jacket with mesh lining. Regular fit. Chest panel with flap on front and back. Functional contrast lace drawcords around hood with metal eyelets. Centre front and side-seam zip openings with textured zip pullers. Part-elasticated cuffs. Large kangaroo pocket. Inner patch pocket and embroidery access. Back neck hanging loop. Tag Free.

100% Polyester
150gsm Poplin T400 Water Resistant Finish

FR905 SIZES: XS – 2XL



PRINTED FOR ILLUSTRATION PURPOSES: ALL GARMENTS ARE FREE FROM DECORATION

OUR ETHICAL STATEMENT

ENVIRONMENTAL

Henbury are fully committed to the wellbeing and development of our planet which has encouraged big changes to our personal outlook and the way we trade. We aim to encourage our customers to follow in our footsteps by reducing the volume of waste going to landfill.

Going forward, our products will be packaged in recycled plastic bags, which will be recyclable at the end of life. Packaging components are being reduced by a huge 77% across shirts, as well as reducing the number of products packaged individually. Finally, our bags will be made for reuse, branding is being removed to allow ease of packaging for further use after decoration or re-branding.

On top of this, our employees are making a conscious choice to print less paper in the office and recycle all excess fabrics/ garments.

It is our corporate responsibility to make an impact in reducing our carbon footprint. All of our marketing materials printed for 2020 were carbon balanced, helping to reduce CO2 emissions and preserving ecologically endangered land with World Land Trust. By using FSC certified papers and printers, promoting responsible management of the world's forests, we are doing our part to make a change.

To reduce our footprint even further, we have taken the decision to only publish our brochure online for 2021, and it doesn't stop there! We aren't letting our 2020 material go to waste either; if you prefer a hard copy to hand, our 2020 brochures are still available to order with an updated insert to remind you of our discontinued lines and new products for 2021.

You can request hard copies of our 2020 brochure at: cloud.henbury.com

MANUFACTURERS

We work with the very highest level of manufacturers developing strong, long-term partnerships to promote understanding of International Ethical Trading practices. Working with all our global suppliers to promote respect for workers' rights, ensuring workers are free from exploitation and discrimination, and enjoy conditions of freedom, security and equality. We fully recognise the importance of the people and the countries where we manufacture, and we require any associated manufacturer or supplier to share our commitment to fair and safe working practices. Our manufacturing locations are personally selected, inspected via an independent, fully recognised and accredited ethical auditing body and supported with continuous monitoring by our local representatives. This ensures working conditions and practices are to the highest standard and within local government laws.

In addition to ensuring our high ethical standards are achieved, we support and sponsor a number of local charities within the communities with which we work and manufacture.

CERTIFICATIONS

A further indication of our commitment to social responsibility is in the number of certifications that we hold. Specific information by style and clarification relating to various certifications and standards is available from us on request.



Get In Touch

If you want to find out more about the Front Row range or if you would like us to visit you or arrange a virtual meeting with our brand representative, get in touch because we love to chat. It's great to get your feedback too, so don't be shy!

Email: enquiries@frontrowclothing.co.uk
Web: frontrowclothing.co.uk

For more great quality and style, check out the full range of brands at henburybrands.com

HENBURY BRANDS

Be Social

Follow us on Twitter, Facebook and Instagram for the latest Front Row news and updates.



Image Cloud

Download all our logos, torso shots and lifestyle photography via our Cloud on: cloud.henbury.com.



PANTONES

ALL SHADES HAVE NEAREST PANTONE REF LISTED.
ACTUAL SHADES MAY VARY.



BODY MEASURING GUIDE

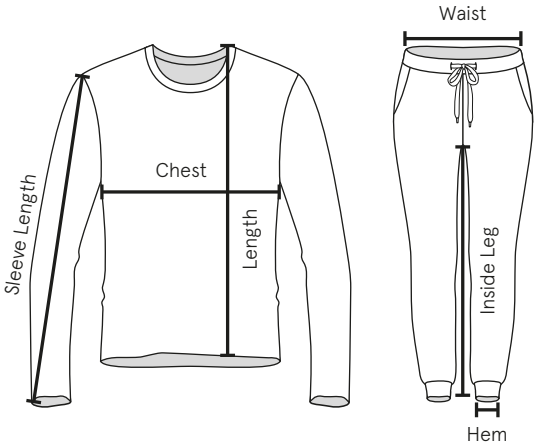
To find your perfect fit, first measure yourself close to your body. Check our measuring guide for your body size and pick the garment size closest to your body measurements. Some garments are made to fit more closely than others, so we have included all our garment measurement specifications on the following pages, to help you choose the right size and best fit for you.

It is advisable to use actual body measurements rather than measuring over clothes.

The fit of a garment may vary depending on the cut, style and fabric.

SPEC SUMMARY

CHARTS SHOW GARMENT MEASUREMENTS, MEASURED FLAT, IN CENTIMETRES UNLESS OTHERWISE STATED.



CHEST	Measure flat 2.5cm below armhole.
FRONT LENGTH	Measure from HPS (High Point Shoulder – where the shoulder seam meets the neck of the garment) to the hem.
SLEEVE LENGTH	Measure overarm from shoulder seam to end of cuff.
WAIST	Measure flat across full width of waistband.
INSIDE LEG	Measure from crotch to hem.
HEM	Measure flat across width of hem

MEN’S GARMENTS

TOPS & OUTERWEAR EXCLUDING FR104/FR500/FR501	2XS	XS	S	M	L	XL	2XL	3XL	4XL	5XL
EUR – Chest – To Fit	42–44	44–46	46–48	48–50	52	54–56	58	60–62	62–64	64–66
Chest – To Fit – Inches	32–34	34–36	36–38	38–40	42	44–46	48	50–52	52–54	54–56
Chest – To Fit – CMs	81–86	86–91	91–96	96–101	107	112–117	122	127–132	132–137	137–142
EXCEPTIONS – FR104/FR500/FR501		XS	S	M	L	XL	2XL	3XL		
FR104 – EUR – Chest – To Fit		44–46	46–48	48–50	52	54–56	56–58	58–60		
FR104 – Chest – To Fit – Inches		34–36	36–38	38–40	42	44–46	46–48	48–50		
FR104 – Chest – To Fit – CMs		86–91	91–96	96–101	107	112–117	117–122	122–127		
FR500 & FR501 – EUR – Chest – To Fit			46–48	48–50	52	52–54	54–56			
FR500 & FR501 – Chest – To Fit – Inches			36–38	38–40	40–42	42–44	44–46			
FR500 & FR501 – Chest – To Fit – CMs			91–96	96–101	101–107	107–112	112–117			

TROUSERS & SHORTS	2XS	XS	S	M	L	XL	2XL
UK – Waist – To Fit – Inches	28	30	32	34	36	38	40
EUR – Waist – To Fit	38	40	42	44	46	48	50
Waist – To Fit – CMs	71	76	81	86	91	96	101
Regular Inside Leg Length – Inches	32	32	32	32	32	32	32
Long Inside Leg Length – Inches	34	34	34	34	34	34	34

LADIES’ GARMENTS

TOPS & OUTERWEAR	XS	S	M	L	XL	2XL	3XL	4XL
UK – To Fit	8	10	12	14	16	18	20	22
EUR – To Fit	36	38	40	42	44	46	48	50
Chest – To Fit – Inches	30–32	32–34	34–36	36–38	38–40	40–42	42–44	44–46
Chest – To Fit – CMs	78–81	81–86	86–91	91–96	96–101	101–107	107–112	112–117

TROUSERS & SHORTS	XS	S	M	L	XL	2XL
UK – To Fit	8	10	12	14	16	18
EUR – To Fit	36	38	40	42	44	46
Waist – To Fit – Inches	26	28	30	32	34	36
Waist – To Fit – CMs	66	71	76	81	86	91
Inside Leg Length – Regular Inches	32	32	32	32	32	32

KIDS' GARMENTS

TOPS – AGE	5/6	7/8	9/10	11/13
Height – CMs*	116	128	140	158
Chest – To Fit – Inches	24–26	26–28	28–30	30–32
Chest – To Fit – CMs	60–66	66–71	71–76	76–81

*Please note that height is a better indication of fit than age.

TOPS & OUTERWEAR			XS	S	M	L	XL	2XL	3XL	4XL	5XL	TOL
FR001	Long Sleeved Original RUGBY SHIRT	Chest		47	51	56	61	63.5	68.5			+/-1.5
		Length		72.5	74.5	77	79.5	82	83			+/-2
		Sleeve Length		56	58.5	61	63.5	66	66			+/-1.5
FR002	Quartered RUGBY SHIRT	Chest		47	51	56	61	63.5				+/-1.5
		Length		72.5	74.5	77	79.5	82				+/-2
		Sleeve Length		56	58.5	61	63.5	66				+/-1.5
FR003	Short Sleeved Original RUGBY SHIRT	Chest		47	51	56	61	63.5				+/-1.5
		Length		72.5	74.5	77	79.5	82				+/-2
		Sleeve Length		29	29	29	30	31				+/-1.5
FR006 NEW	Panelled QUARTER ZIP	Chest	50	53	56	59	62	65				+/-2
		Length	68	70	72	74	76	78				+/-1.5
		Sleeve Length	59	60	61	62	63	64				+/-1.5
FR007	Panelled RUGBY SHIRT	Chest		47	51	56	61	63.5				+/-1.5
		Length		72.5	74.5	77	79.5	82				+/-2
		Sleeve Length		56	58.5	61	63.5	66				+/-1.5
FR008	Striped RUGBY SHIRT	Chest		47	51	56	61	63.5				+/-1.5
		Length		72.5	74.5	77	79.5	82				+/-2
		Sleeve Length		56	58.5	61	63.5	66				+/-1.5
FR040	Supersoft Quarter Zip SWEATSHIRT	Chest		52	56	60	64	68				+/-1.5
		Length		73	74	75	76	77				+/-2
		Sleeve Length		60	61	62	63	64				+/-2
FR043	Supersoft Long Sleeved RUGBY SHIRT	Chest		48	52	56	60	64				+/-1.5
		Length		73	75	77	79	81				+/-2
		Sleeve Length		65	66.5	68	70.5	73				+/-2
FR100	Men's Long Sleeved Plain RUGBY SHIRT	Chest	44	47	51	55	59	63	67	71	75	+/-1.5
		Length	69.5	72.5	74.5	77	79.5	82	83	84	85	+/-2
		Sleeve Length	53.5	56	58.5	61	63.5	66	68.5	71	73.5	+/-1.5
FR101	Ladies' Long Sleeved Plain RUGBY SHIRT	Chest	43	44.5	47	49.5	52	54.5	56	58		+/-1.5
		Length	64.5	67	67	68	69	69	70	71		+/-2
		Sleeve Length	61.5	62	63	63.5	64	64	64.5	64.5		+/-2
FR104	Premium Superfit RUGBY SHIRT	Chest	47	50	54	57	60	63	66			+/-1.5
		Length	70	72	73.5	75	76.5	78	79.5			+/-2
		Sleeve Length	63	65.5	67	68	69	70	71			+/-2

TOPS & OUTERWEAR		2XS	XS	S	M	L	XL	2XL	TOL
FR109	Kids' Long Sleeved Plain RUGBY SHIRT	Age		5–6	7–8	9–10	11–13		
		Chest		34	36	40	44		+/-1.5
		Length		49	59	62	65		+/-1.5
		Sleeve Length		42	48	49	50		+/-1.5
FR134	Long Sleeved Breton Striped T-SHIRT	Chest	46	49	52	55	58	61	+/-1.5
		Length	68	70	72	74	76	78	+/-2
		Sleeve Length	63.5	64.5	65.5	66.5	67.5	68.5	+/-2
FR135	Short Sleeved Breton Striped T-SHIRT	Chest	46	49	52	55	58	61	+/-1.5
		Length	68	70	72	74	76	78	+/-2
		Sleeve Length	19	20	21	22	23	24	+/-1
FR200	Men's Contrast Pique POLO SHIRT	Chest		48	52	56	60	64	+/-1.5
		Length		70	72.5	75	77.5	80	+/-2
		Sleeve Length		25	25.5	25.5	26	26.5	+/-1.5
FR201	Ladies' Contrast Pique POLO SHIRT	Chest		45	47.5	50	52.5	56	+/-1.5
		Length		64.5	65.5	66.5	67.5	68.5	+/-2
		Sleeve Length		15.0	15.5	16	16.5	17	+/-1
FR212	Men's Diagonal Striped Pique POLO SHIRT	Chest	46	48	52	56	60	64	+/-1.5
		Length	68	71.5	73.5	75.5	77.5	79.5	+/-2
		Sleeve Length	23.5	24	24.5	25.5	26	26.5	+/-1.5
FR213	Ladies' Diagonal Striped Pique POLO SHIRT	Chest		45	47.5	50	52.5	56	+/-1.5
		Length		65.5	67	68.5	69.5	70	+/-2
		Sleeve Length		15	15.5	16	16.5	17	+/-1
FR230	Striped Jersey POLO SHIRT	Chest	46	49	52	55	58	61	+/-1.5
		Length	68	70	72	74	76	78	+/-2
		Sleeve Length	22.5	23.5	24.5	25.5	26.5	27.5	+/-1.5
FR244	Stand Collar Stretch POLO SHIRT	Chest	46	49	52	55	58	61	+/-1.5
		Length	68	70	72	74	76	78	+/-2
		Sleeve Length	22.5	23.5	24.5	25.5	26.5	27.5	+/-1.5
FR500	Checked Cotton SHIRT	Chest		52.5	55	57.5	60.5	63	+/-1.5
		Length		74	75.5	77	78.5	80	+/-2
		Sleeve Length		67.5	68.5	69.5	70.5	71.5	+/-2
FR501	Classic Chambray SHIRT	Chest		52.5	55	57.5	60.5	63	+/-1.5
		Length		74	75.5	77	78.5	80	+/-2
		Sleeve Length		67.5	68.5	69.5	70.5	71.5	+/-2
FR502	Supersoft Casual SHIRT	Chest	48	51	54	57	60	63	+/-1.5
		Length	74	75.5	77	78.5	80	81.5	+/-2
		Sleeve Length	64	65	66	67	68	69	+/-2
FR832	French Terry HOODIE	Chest	48	51	54	57	60	63	+/-1.5
		Length	71	72	73	74	75	76	+/-2
		Sleeve Length	77	79	81	83	85	87	+/-2

TOPS & OUTERWEAR			2XS	XS	S	M	L	XL	2XL	TOL
FR840 NEW	Striped Cuffed SWEAT	Chest		48	51	54	57	60	64	+/-1.5
		Length		68	70	72	74	76	78	+/-2
		Sleeve Length		64	65	66	67	68	69	+/-2
FR841 NEW	Striped Cuffed HOODIE	Chest		48	51	54	57	60	63	+/-1.5
		Length		68	70	72	74	76	78	+/-2
		Sleeve Length		64	65	66	67	68	69	+/-2
FR903	Diamond Quilt GILET	Chest	47	50	53	56	59	62	65	+/-1.5
		Length	63	65	67	69	70	72	74	+/-2
FR905 NEW	Pullover Half Zip JACKET	Chest		51	54	57	60	63	66	+/-1.5
		Length		69	71	73	75	77	79	+/-2
		Sleeve Length		61.5	63.5	65.5	67.5	69.5	71.5	+/-2

TROUSERS & SHORTS		MEN'S	2XS/28"	XS/30"	S/32"	M/34"	L/36"	XL/38"	2XL/40"	TOL
		LADIES'	XS/8	S/10	M/12	L/14	XL/16	2XL/18		
FR602	Men's Board SHORTS	Waist		33	36	39	42	45	48	+/-1.5
		Hem		26	27	28	29	30	31	+/-1.5
		Inside Leg		15.5	15.5	15.5	15.5	15.5	15.5	+/-1
FR605	Men's Stretch CHINO SHORTS	Waist	36.5	39	42	44.5	47	49.5	52	+/-1.5
		Hem	22.5	23	23.5	24	24.5	25	25.5	+/-1.5
		Inside Leg	25	25	25	26	26	26	26	+/-1.5
FR606	Ladies' Stretch CHINO SHORTS	Waist		37.5	40	42.5	45	47.5	50	+/-1.5
		Hem		24	24.5	25	26	27	27.5	+/-1.5
		Inside Leg		22	22	22	23	23	23	+/-1.5
FR621	Men's Stretch CHINOS	Waist	36.5	39	42	44.5	47	49.5	52	+/-1.5
		Hem	17.5	18	18.5	19	20	20.5	21	+/-1
		Inside Leg Reg	32"	32"	32"	32"	32"	32"	32"	+/-2
		Inside Leg Long	34"	34"	34"	34"	34"	34"	34"	+/-2
FR622	Ladies' Stretch CHINOS	Waist		37.5	40	42.5	45	47.5	50	+/-1.5
		Hem		15.5	16	16.5	17	17.5	18.5	+/-1
		Inside Leg		32"	32"	32"	32"	32"	32"	+/-2
FR625 NEW	Stretch Cargo TROUSERS	Waist		40	42	44	46	47	48	+/-1.5
		Hem		18.5	18.5	18.5	18.5	18.5	18.5	+/-1
		Inside Leg		32"	32"	32"	32"	32"	32"	+/-2
FR630	French Terry JOGGERS	Waist		35	37.5	40	42.5	45	47.5	+/-1.5
		Hem		11	11.5	12	12.5	13	13.5	+/-1
		Inside Leg		74	74	75	75	76	76	+/-2
FR640 NEW	Striped Cuffed JOGGERS	Waist		35	37	39	41	43	45	+/-1.5
		Hem		10.5	11.5	11.5	12.5	13.5	14.5	+/-1
		Inside Leg		71	71	71	72	72	72	+/-2

RANGE OVERVIEW

CASUAL TOPS



— TAG FREE —
FR134
Long Sleeved Breton Striped T-shirt
Pg 9



— TAG FREE —
FR135
Short Sleeved Breton Striped T-shirt
Pg 9



— TAG FREE* —
FR200
Men's Contrast Pique Polo Shirt
Pg 12



— TAG FREE* —
FR201
Ladies' Contrast Pique Polo Shirt
Pg 12



— TAG FREE —
FR212
Men's Diagonal Striped Pique Polo Shirt
Pg 13



— TAG FREE —
FR213
Ladies' Diagonal Striped Pique Polo Shirt
Pg 13



— TAG FREE —
FR230
Striped Jersey Polo Shirt
Pg 10



— TAG FREE —
FR244
Stand Collar Stretch Polo Shirt
Pg 11

RUGBY SHIRTS



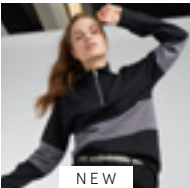
FR001
Long Sleeved Original Rugby Shirt
Pg 18



FR002
Quartered Rugby Shirt
Pg 19



FR003
Short Sleeved Original Rugby Shirt
Pg 18



FR006
Panelled Quarter Zip
Pg 20



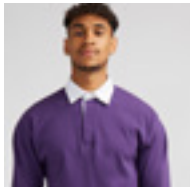
FR007
Panelled Rugby Shirt
Pg 21



FR008
Striped Rugby Shirt
Pg 19



— TAG FREE* —
FR043
Front Row Collection Supersoft Long Sleeved Rugby Shirt
Pg 23



FR100
Men's Long Sleeved Plain Rugby Shirt
Pg 16/17



FR101
Ladies' Long Sleeved Plain Rugby Shirt
Pg 16



— TAG FREE —
FR104
Premium Superfit Rugby Shirt
Pg 22



FR109
Kids' Long Sleeved Plain Rugby Shirt
Pg 16

THIS IS
FRONT
ROW
& CO.

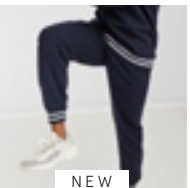
SWEATS



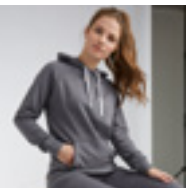
— TAG FREE* —
FR040
Front Row Collection Supersoft Quarter Zip Sweatshirt
Pg 29



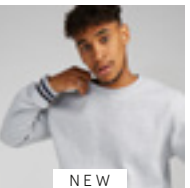
— TAG FREE —
FR630
French Terry Joggers
Pg 28



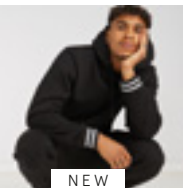
NEW
— TAG FREE —
FR640
Striped Cuffed Joggers
Pg 25



— TAG FREE —
FR832
French Terry Hoodie
Pg 28



NEW
— TAG FREE —
FR840
Striped Cuffed Sweat
Pg 26/27



NEW
— TAG FREE —
FR841
Striped Cuffed Hoodie
Pg 26

WOVENS



— TAG FREE* —
FR500
Checked Cotton Shirt
Pg 36



— TAG FREE* —
FR501
Classic Chambray Shirt
Pg 37



— TAG FREE —
FR502
Supersoft Casual Shirt
Pg 37



— TAG FREE —
FR602
Men's Board Shorts
Pg 35



— TAG FREE —
FR605
Men's Stretch Chino Shorts
Pg 34



— TAG FREE —
FR606
Ladies' Stretch Chino Shorts
Pg 34



— TAG FREE —
FR621
Men's Stretch Chinos
Pg 32/33



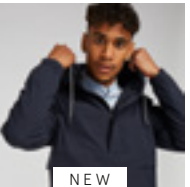
— TAG FREE —
FR622
Ladies' Stretch Chinos
Pg 32



NEW
— TAG FREE —
FR625
Stretch Cargo Trousers
Pg 31



FR903
Diamond Quilt Gilet
Pg 38



NEW
— TAG FREE —
FR905
Pullover Half Zip Jacket
Pg 39

* PLEASE NOTE: SOME STOCK OF FR200/FR201/FR500/FR501 MAY HAVE SEWN-IN LABELS; SOME STOCK OF FR040/FR043 MAY HAVE PRINTED LABELS. ALL RECENT AND NEW PRODUCTION OF ALL STYLES ARE TAG FREE.

FRONT ROW & CO

EST. 1991



frontrowclothing.co.uk



[frontrowandco](#)



[frontrowandcoclothing](#)



[frontrowandcoclothing](#)